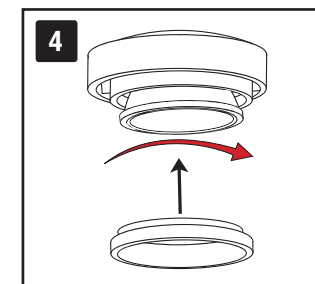
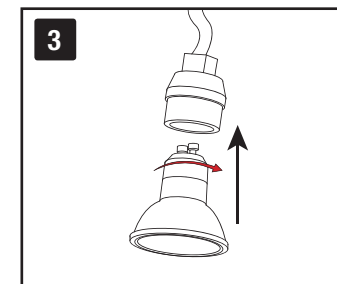
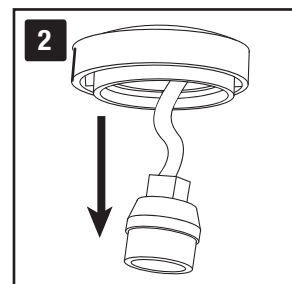
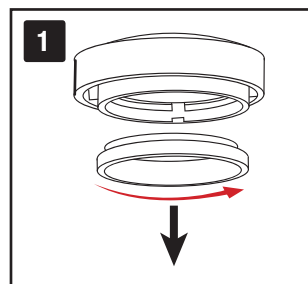


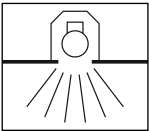
LAMP INSTALLATION



EN-MGU101AK, EN-MGU102AK

PLEASE READ THESE INSTRUCTIONS CAREFULLY BEFORE INSTALLATION LEAVE A COPY FOR THE USER / MAINTENANCE ENGINEER FOR FUTURE REFERENCE

- Installation should be carried out by a qualified electrician in accordance with the latest edition of the National wiring regulations (For Australia please check the latest edition of the Wiring Rules -AS/NZS 3000:2007).
- **IMPORTANT.** Ensure that ALL electrical connections are tight with no loose strands, including factory made connections.
- Ensure there is adequate free air circulation of at least 50mm on the sides and 25mm above the fitting. All luminaires run hot. It is the installer's responsibility to consider fire risk and take appropriate precautions.
- Input voltage - 220-240V 50/60Hz AC for GU10 lamps. MAX 50W halogen lamp allowed.
- Replace failed lamps immediately. **WARNING!** These luminaires can become hot. Allow to cool before replacing lamps.
- Check that the correct lamp type and wattage is fitted (See product label for the maximum lamp wattage). If halogen lamps are to be used fit self-shielding lamps only.
- The nearest illuminated surface must be at least 0.5m from the front of the luminaire.
- For indoor use only.



This luminaire cannot be abutted against or covered by normally flammable materials or used in installations where building insulation or debris is, or may be, present in normal use.



Luminaires not suitable for mounting on normally flammable surfaces when used with a 50W halogen lamp. Can be mounted on a normally flammable surface when used with a lamp that is 35W or lower.

GUARANTEE

This product is guaranteed for a period of 5 years from the date of purchase. The guarantee is invalid in the case of improper use, installation, tampering, and removal of the Q.C. date label, installation in an improper working environment or installation not according to the current edition of the Wiring Rules (AS/NZS 3000:2007). Should this product fail during the guarantee period it will be replaced free of charge, subject to correct installation and return of the faulty unit. Enlite does not accept responsibility for any installation costs associated with the replacement of this product. This warranty is in addition to the statutory rights in your country of purchase. Enlite reserves the right to alter specifications without prior notice.